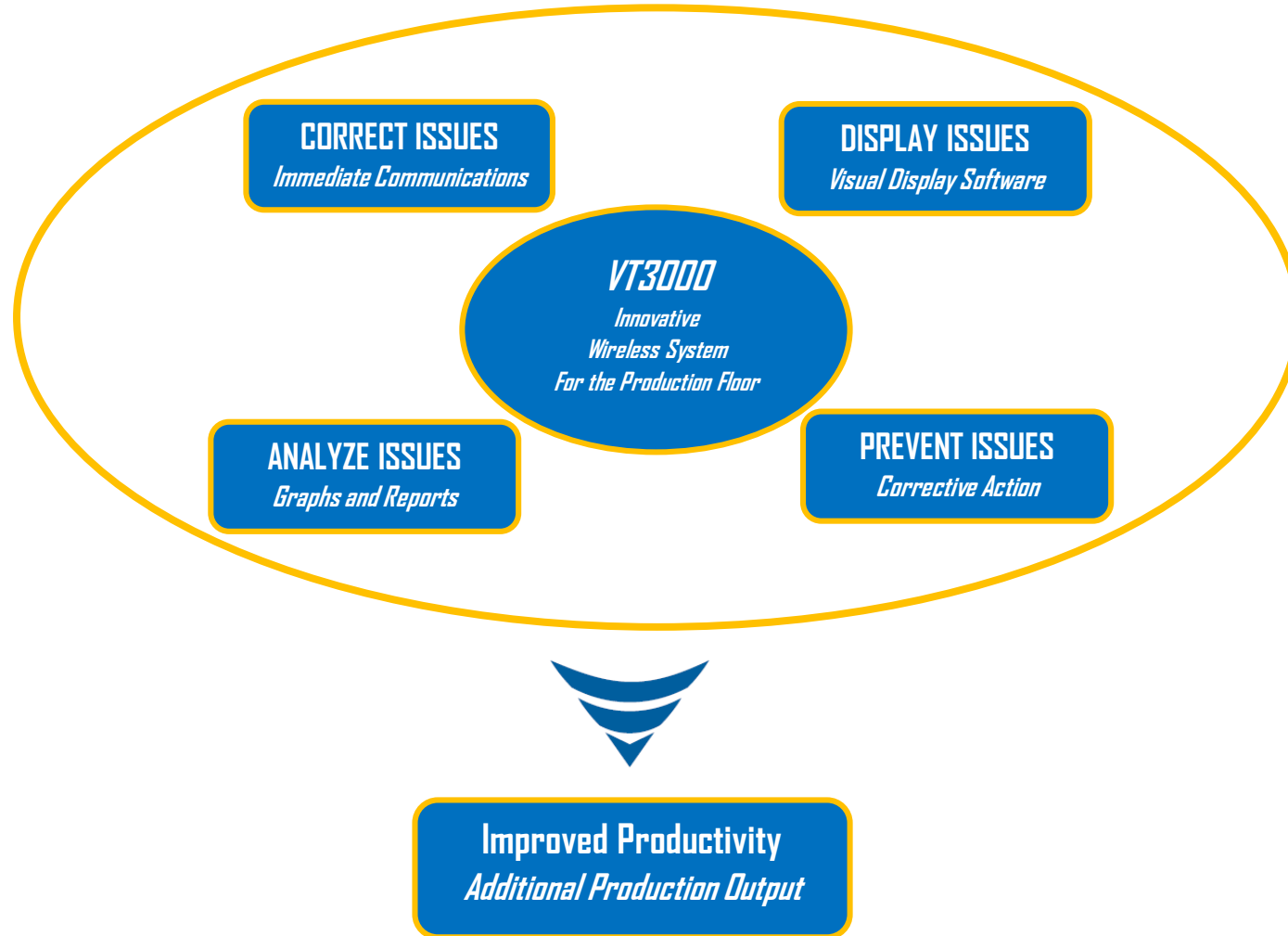




VT 3000 SYSTEM

Wireless Innovations Improving Productivity



Immediate Communications

Visual Management

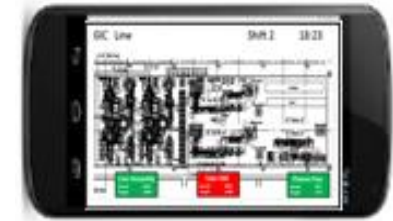
Automatic Data Collection

Visual & Audio Andons

Real Time Performance Visibility

Recover Lost Production Time

- Minimizing Production Disruptions – Reduce Downtime
- Identifying & Immediately Correcting Production Abnormalities
- Immediate Communications of Production Issues



Visual Management

- Performance Feedback to Line Operators
- View Equipment or Production Station Status
- View Line Status & Plant Status
- Enterprise Status

Station	Actual	Target	%	Comments
Cell 1	32	55	58.2	LINE DOWN FOR MAINTENANCE
Cell 2	45	51	88.2	ON GOAL FOR THE DAY
Cell 3	22	30	73.3	MORNING INSPECTION COMPLETED
Cell 4	21	30	70.0	ASSEMBLY STATION 1 IS DOWN
Cell 5	39	20	195.0	ABOVE GOAL GREAT WORK



Easily Identify Process Bottlenecks/ Areas for Improvement / Track Week to Week Improvements

Automatically Capture Performance Data

Significantly Improving the Accuracy /Timeliness/Consistency/Completeness of the Data





Machine Centers



Moving Assembly Lines & Stationary Assembly Operations



Packaging Line



Cell Manufacturing



Process Flow Lines



Production Lines



Turning Lost Downtime Into Productive Time

8 Hours of Downtime Turned Into Productive Time – 1st Month



Qualifying Root Cause of Issues for Process Improvement

250 Calls 1st Week - 70% Related to Material Issues



Visual Management - One Screen Complete Line Visibility



Individual Assembly Line Status

- Line Output
- Takt Time Performance Actual vs. Target
- Lost Production Time
- Individual Work Zone Status



Efficient and Timely OEE Reports Improves Output

Eliminated All Manual Data Collection – Immediate OEE Reports

Financial Paybacks Are Realized From:

- Reducing Downtime – Immediate Communications of Issues
- Reducing Set-Up Time
- Automated Data Collection
- Real Time Monitoring of Production Status – Identifying Abnormalities

Complete System Start at \$7,500

Customer Example – System & Payback

VT3000 System - \$10,100

- Control Unit [Server] with Receiver
- 10 Input Modules – Call Stations
- 1 Repeater
- Large Screen Display Software
- 2 Way Radio Transceiver

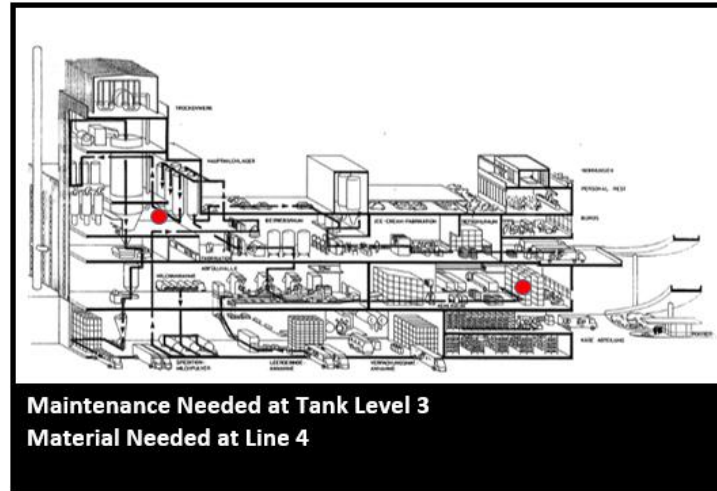
Financial Payback – 3.2 Months (Annual Return \$37,500)

- 30 Incidents [10 Per Shift] – Total Plant – All Shifts - 4 Minute Savings Per Incident
- 3 Employees Affected Per Incident

Templates at Available For Calculating ROI

New Andon Technology

LED Light is completely Programmable



Un- Paralleled Performance Visibility

Performance		Productivity		Line Utilization	
Target Cycle Time	20.2	Target	1000	Target	90%
Average Cycle Time	0.0	Expected	929	Actual	100%
Variance	20.2	Actual	0	Variance	10%
Last Week		Variance	-929	Downtime	
1st	0	Time		Equipment	0:00:00
2nd	1	3:26 PM		Quality	0:00:00
3rd	0	13M Accord		Materials	0:00:00

	TP-3	TP-4	TP-5
Work Order	2701319	2691128	2701619
Part Number	981157	967120	978757-1
Status	0:59:17	0:55:20	0:00:09
Parts/Hour	96.0	0.0	36.0
Target	110.00	50.00	0.00
Productivity % 5 min	87.3	0.0	0.0
Support - Org			



SYSTEM INPUTS

OPERATOR INITIATED

- WIRELESS CALL STATION
- BSC MODULE
- TOUCH INPUT MODULE
- PRODUCTION STATUS MODULE

MACHINE INITIATED

- SOFTWARE SWITCHES
- PLC'S
- SWITCH CONTACTS



Downline Detail Report

DATE	TIME	LINE	STATUS	REASON	OPERATOR
01/11/11	08:00:00	001	DOWN	NO PARTS	JOHN
01/11/11	08:05:00	001	UP		
01/11/11	08:10:00	002	DOWN	NO PARTS	JOHN
01/11/11	08:15:00	002	UP		
01/11/11	08:20:00	003	DOWN	NO PARTS	JOHN
01/11/11	08:25:00	003	UP		
01/11/11	08:30:00	004	DOWN	NO PARTS	JOHN
01/11/11	08:35:00	004	UP		
01/11/11	08:40:00	005	DOWN	NO PARTS	JOHN
01/11/11	08:45:00	005	UP		
01/11/11	08:50:00	006	DOWN	NO PARTS	JOHN
01/11/11	08:55:00	006	UP		
01/11/11	09:00:00	007	DOWN	NO PARTS	JOHN
01/11/11	09:05:00	007	UP		
01/11/11	09:10:00	008	DOWN	NO PARTS	JOHN
01/11/11	09:15:00	008	UP		
01/11/11	09:20:00	009	DOWN	NO PARTS	JOHN
01/11/11	09:25:00	009	UP		
01/11/11	09:30:00	010	DOWN	NO PARTS	JOHN
01/11/11	09:35:00	010	UP		
01/11/11	09:40:00	011	DOWN	NO PARTS	JOHN
01/11/11	09:45:00	011	UP		
01/11/11	09:50:00	012	DOWN	NO PARTS	JOHN
01/11/11	09:55:00	012	UP		
01/11/11	10:00:00	013	DOWN	NO PARTS	JOHN
01/11/11	10:05:00	013	UP		
01/11/11	10:10:00	014	DOWN	NO PARTS	JOHN
01/11/11	10:15:00	014	UP		
01/11/11	10:20:00	015	DOWN	NO PARTS	JOHN
01/11/11	10:25:00	015	UP		
01/11/11	10:30:00	016	DOWN	NO PARTS	JOHN
01/11/11	10:35:00	016	UP		
01/11/11	10:40:00	017	DOWN	NO PARTS	JOHN
01/11/11	10:45:00	017	UP		
01/11/11	10:50:00	018	DOWN	NO PARTS	JOHN
01/11/11	10:55:00	018	UP		
01/11/11	11:00:00	019	DOWN	NO PARTS	JOHN
01/11/11	11:05:00	019	UP		
01/11/11	11:10:00	020	DOWN	NO PARTS	JOHN
01/11/11	11:15:00	020	UP		



REAL-TIME SCREENS
SMART PHONES, TABLETS
& REPORTS

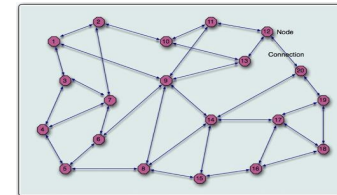
SYSTEM OUTPUTS

- EMAIL
- PAGERS
- 2 WAY RADIOS
- OVERHEAD PA
- PHONES
- LIGHTS & HORNS

Call Station - Battery or Powered

Captures Response Time to Issues

- ❖ **Introduces a Whole New Concept of Support Accountability**
Also Escalates and Routes Messages Until Acknowledgement
- ❖ **Every Request for Support is Logged in Database [Time and Date Stamped]**
- ❖ **Provides Visibility of Support Personnel Response Performance to the Production Floor**
- ❖ **Innovative Zigbee Wireless “Mesh” Technology**
- ❖ **NEMA 4-sealed housing / Membrane Switch Buttons**
- ❖ **Contains 4 Switch Contacts**
- ❖ **Up to 1,500 Units per System – 6000 Monitoring Points in Control Unit [Server]**
- ❖ **Communication Path for Each Individual Button is Programmable**



*DigiMesh Technology Forms
It's Own Network*

BSC Module – Programmable Buttons



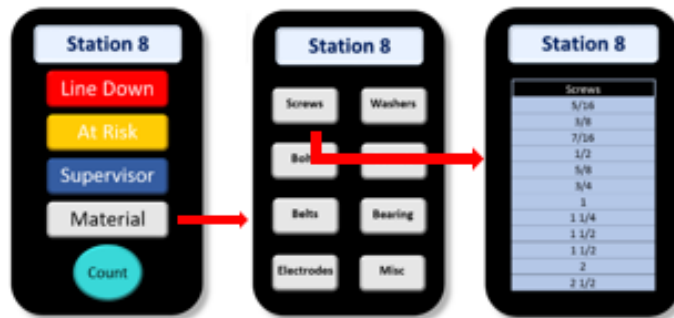
Touch Screen



I/O Module

- *Choose Button Type, Color, Size & Quantity*
- *Flexible Layouts*
- *Programmable*
- *Link Multiple Screens*
- *Immediate Communications*
- *Simple & Flexible*

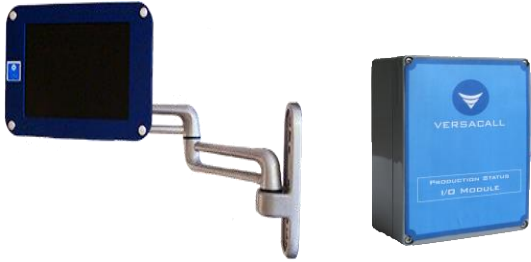
Flexible and Completely Programmable by Button and Level



Multiple Layout Options



Touch Input Module – 7” Screens



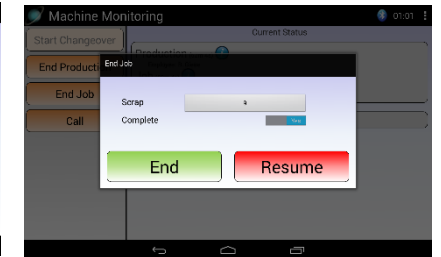
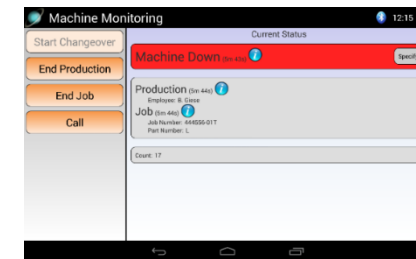
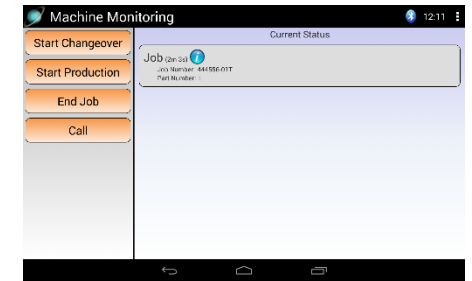
- ❖ *Programmable & Configurable Touch Screen Displays*
- ❖ *Number of Individuals to Call – Programmable 20+*
- ❖ *Immediate Communications -Response Time & Escalations*
- ❖ *Captures Counts & Downtime With Reasons*
- ❖ *Full Touch Screen Keyboard & Key Pad*



Module Features

- Configurable Touch Screen Display
- Captures the Responding Individual w/ NFC Technology
- Module Retrieves Data for Look Up List
- Wireless Configuration Set-Up & Changes
- Supports Wireless Bar Code Scanners
- Clear Alarms/Actions from Different Modules
- Full Communication Capabilities
- Full Touch Screen Keyboard & Key Pad

Completely Configurable Screens



Touch Screen Applications

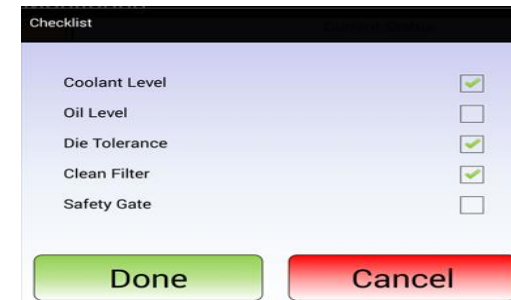
Verification of Certified Operator or Trained Operator

Verifies that the operator has been trained on the equipment . Can Set-Up so Operator Must Perform Function Before Starting Equipment. Can have immediate communications to floor supervisor when there is an issue.

Check List

Can Set-Up so Operator Must Perform Function Before Starting Equipment.

Can be a Dynamic List -Change by Location or Station or Part Number



Request Material Including Quantities

Operator Pushes "Material Button" - List appears & operator select the material required. Material List is can be a "Dynamic List" - it can be different by locations or Part Number being produced. Options to request the quantities required.

Run Jobs or Production Runs In Sequence

Production runs or job numbers that are to be run are loaded into the system by line management. Job sequence is shown on the touch screen.

Touch Screen Programmable Indicator Status

8 Programmable Indicator Status On the Screen - Each Screen Can Have It's Own Indicators - Colors Change to Reflect Status



Wireless Switch Contact Module – Input Module



Wireless

- Simple Inputs
- Normally Open/Closed
- Fully Programmable

Wireless Controls Module



Wireless Activation

- Lights
- Horns
- Speakers
- Inputs Can Control Outputs
- Program remotely



Repeater

Moving Assembly Module



Wireless

- Full Communications
- Simple to Use – One Button to Signify Work Complete
- Captures Assembly Performance within Assembly Line
- Automatically Resets

I / O Module



Wireless

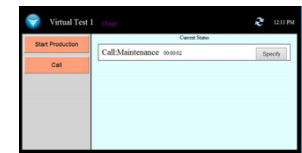
- Machine Interface
- 4 Inputs
- 7 Outputs
- Inputs Can Control Outputs

Computer Screen Modules PC Modules

For LAN Connected PC's
Touch Screen or Mouse



PC Call Station
Add'l Buttons Can Be Added



PC Input Module
Flexible –Layout Completely Configurable

Andons & Communications

- Audio & Visual Andons
- Immediate Communications of Issues
- Wired & Wirelessly Activated Modules



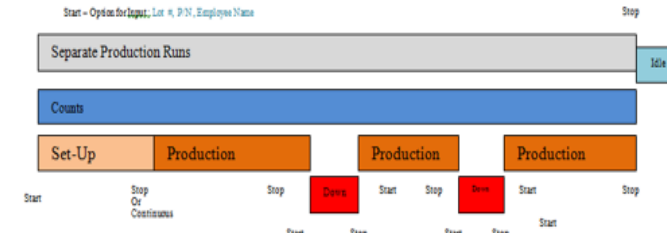
Machine Monitoring Applications

- Captures Lot Number or Production Run Performance Information
- Captures Scrap by Reason Code / Downtime by Reason Code



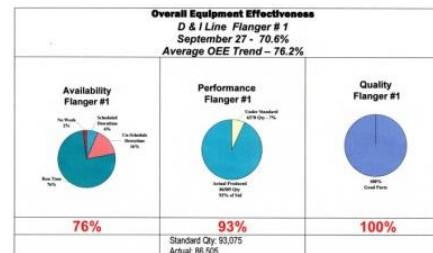
Moving Assembly Line

- Simple – Operator Input
- Measures Each Segments Performance
- Identifies Pacing Segment



Stationary Assembly Operations

- Measures Assembly Activity Against Standards
- Visibility Status of Assembly Activity
- Immediate Communications of Issues



OEE

- Complete System – Data Capture to Reporting
- Eliminates Manual Data Collection
- Critical Visibility for Addressing Issues

Innovative Software that Expands The System Capabilities

Software Tools That Allows Customers to Easily Modify & Reconfigure Their System's Operation

VT3000 Advanced Monitoring Software – AMS

What It Provides

The AM Software provides the capability to monitor for a status or a condition. When this status or condition occurs specific pre-defined actions are initiated.

AMS - Powerful Tool for Easily Developing Custom System Solution

VT3000 Advanced Scheduling Software

What It Provides

The AS Software provide the capability to schedule predefined specific actions. These actions can be for set times or linked to shifts.

Innovative Approach for Capturing Operational Performance – Accomplishment

Measure Performance Status by Measuring Accomplishment

Applies to Manufacturing That Does Not Have Standard Performance Measurement

One of a Kind Production – Custom – Large Unit Assembly

Allows You to Measure What You Have Not Been Able to Measure in the Past

- *Immediate Visibility of Unit Completion Status*
- *Customizable & Adaptable to Any Type of Unit or Version of the Unit*
- *Simple – Measure Accomplishment or Task Completion*
- *Line Personnel Simply Checks a Box When Individual Task is Completed or Accomplished*
- *Flexible – Can Be Utilized for End Units or Sub-Assemblies Units*
- *Instant Communication of Issues*



Unit Module Fabrication					10:17
Position	1	2	3	4	5
Part Type	A	C	C	D	D
Serial #					
Remaining Takt Hrs/Min	65:14	14:17	45:27	35:21	53:43
% Complete	35%	77%	55%	48%	35%
Status					



Andon Lights
Sizes Up to 100MM
Poles up to 10' +



E-Mail



Audio Andons - Wireless Horns
MP3 Player - Up to 105 dB
Any Sound / Tune / Music



2 Way Radios & Transceiver
Supports Up to 8 Channels



Vehicle Mounted Display
Forklifts, Tuggers, Lift Trucks
Wireless



Desktop & Cell Phones



On- Site Paging Transmitter
On-Site Pagers
2 Lines - Easy to Read

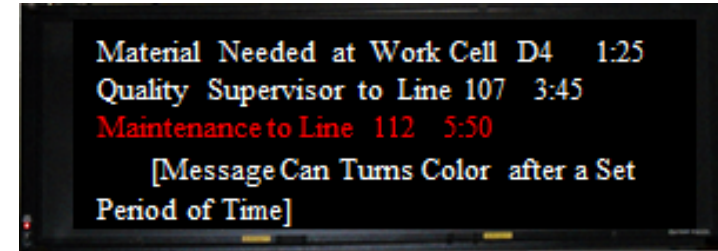
Fully Integrated Andon Systems

From Input Modules to Displays

Input Modules



Communications Support Request



Production Activity Status



Production Schedule

CB 4000 Assembly Line					Monday 3-4
	Serial Number	Part Number	Customer	Color	Controls
1	11676	45600	Dom	Green	Basic
2	25458	42600	EU	Green	Basic
3	11674	45600	Dom	Green	Basic
4	11702	45600	Dom	Green	Basic
5	11704	45700	Dom	Yellow	Basic
6	25769	42650	EU	Green	Adv
7	25762	42600	EU	Green	Basic
8	11706	45600	Dom	Green	Basic

VP IV
Virtual Panel IV Software
New Panel Software

- Systematic Panel Generation Process
- Wizard Guides Panel Development
- Significant Reduction in Panel Creation Time
- Improved Options in Panel Development Choices
- Easy Correction Feature

VP IV Software Right Sizes to Device – Same Screen on a Smart Phone as Large Screen Display

Linking Communications With Visual & Audio Andon Notification

Un-Paralleled Performance Visibility

Line Performance – Stack Lights



Operator / Cell / Equipment Performance



Android & iPad Tablets

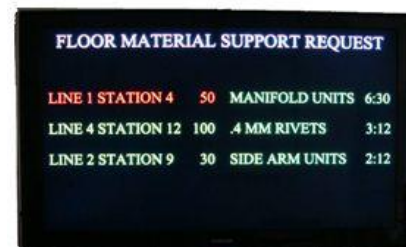


Production Floor - White Boards

Station	Actual	Target	%	Comments
Cell 1	32	55	58.2	LINE DOWN FOR MAINTENANCE
Cell 2	45	51	88.2	ON GOAL FOR THE DAY
Cell 3	22	30	73.3	MORNING INSPECTION COMPLETED
Cell 4	21	30	70.0	ASSEMBLY STATION 1 IS DOWN
Cell 5	39	20	195.0	ABOVE GOAL GREAT WORK



Material Support

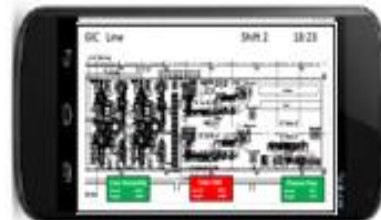
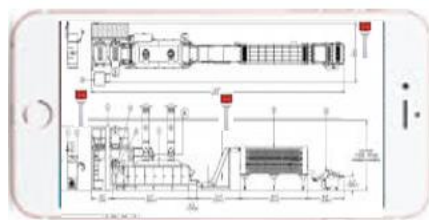
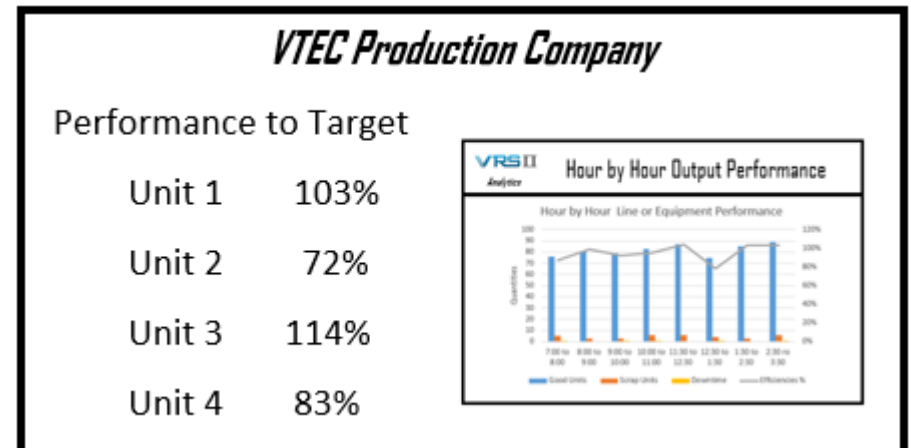
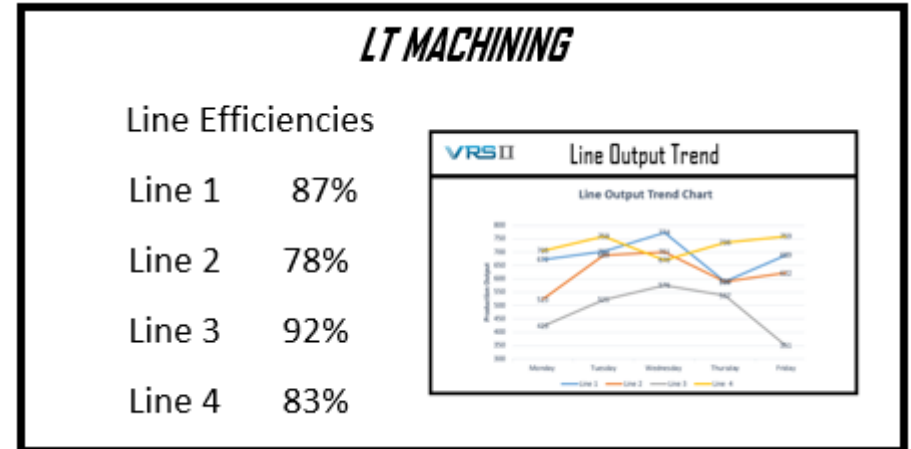
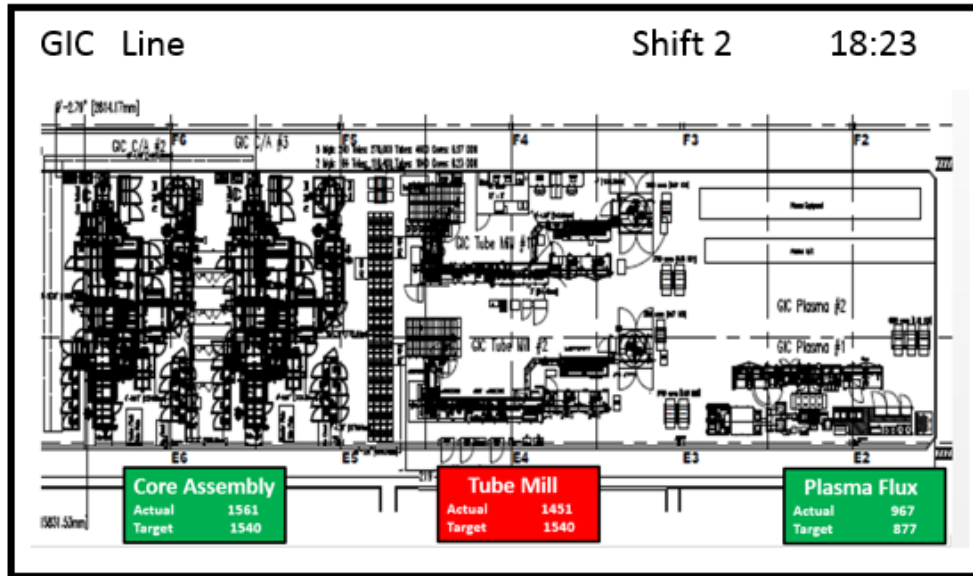


Smart Phone KPI's



Unique Visual Management Solutions

Updating Graphs & Real Time Performance Information



VP IV Software

Multiple Layout Options / Flexibility



- **Type of Information Displayed**
 - Plant Wide Information Messages
 - Factory Floor/ Line Performance Status
 - Real Time Performance Status



- **What is Displayed**

Text, Images, Scrolling Messages, Counts, Duration
Calculations, Conditional Messages, States, Formulas



- **How Information is Displayed**

Choose Font Size, Font Types, Font Color, Flashing Panel or Flashing Letters, Real Time Update Rates

- **Where / Sequence of Information**

Target Specific Areas
Entire Plant



- **User Friendly Tools –On Line**

Interactive On-Line Session

Design Your Own Screen Layouts



Andons



Messaging



Informational

Current Production - Line 8		10:55 AM		
	Machine 1	Machine 2	Machine 3	
Part Number	R01228	R0408	R06076	
Work Order	102016	1001016	1111016	
Status	Production	Setup	Production	
Count	300	0	137	

Performance



Combo

- **Start With Example Templates**

Andons / Messaging / Informational / Performance / Combo

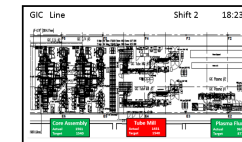
- **Using Step by Step Wizards**

Develop Screen Layouts

Process Takes 20 Minutes

Final Layout that Fits Your Needs

- **Alternative - Developing Custom Screens Layout Solutions**



Plant Layouts



VRS II *Template Approach Provides Rapid Report Generation*

Other Features

- Automatic Report Generation Feature

Reports Automatically Created for Shift, Day, Week - Sent Directly to Your E-mail

- Clear /Concise Graphs & Report Formats

Immediately Spot Issues & Root Causes – Simple Red/ Yellow / Green Designations

- Financial Performance Impacts Feature

Reports that Profile the Cost of Downtime & the Cost of Scrap

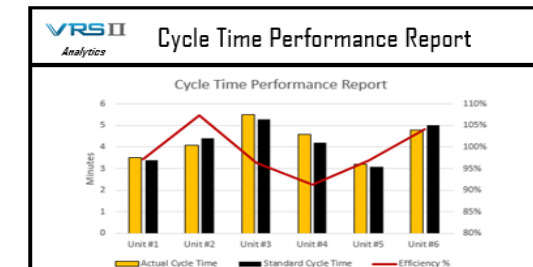
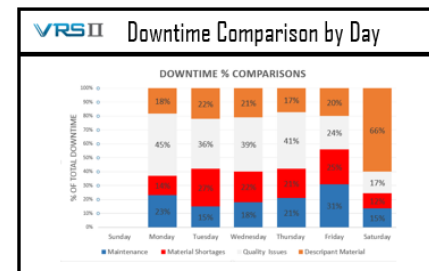
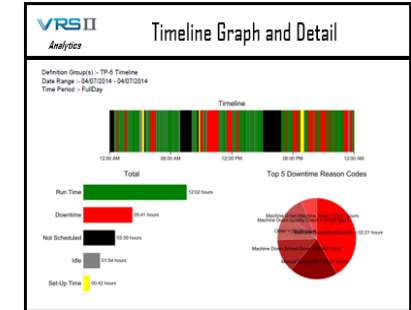
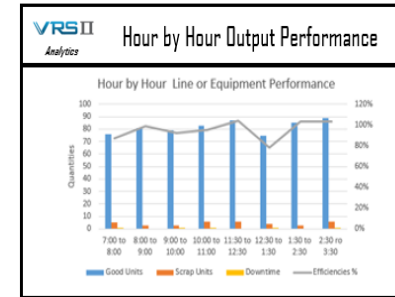
- Configure Custom Reports & Graphs

Adding In Your Own Title & Logo

- Apply Standards & Target References

Pull Reference Standards for Existing Databases or Look Up Tables Using Data Look Up Manager

- Step by Report Generation Using Wizards & Choosing Templates



Summary of Additional System Features and Capabilities

Verification of Certified or Trained Operators On Machines – *immediate communication to floor supervision when there is a issue.*

Lock Out – *Reason Code must be selected before the equipment can be re-started*

Secondary Communications – *After a defined period has lapsed, then a secondary communication path is initiated for an incident*

Integration with Existing Software System – *Non Invasive – Site is in complete control*

Look Up Tables – *Flexibility to set up varying shifts , Breaks , Lunch Period*

Advance Monitoring Software – *Predefine a set of parameter triggers & actions – system monitors for the parameters*

Advanced Scheduling Software – *Predefined trigger based upon a date, time or a count, System monitors for the date, time or count*

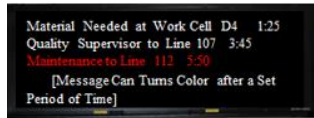
Preventative Maintenance Packaging is in Development

System Monitoring Software - *Software That Insures Your VT3000 System is Operational*

Step 1 - Start Small - Identify One or Two Critical Problem Areas

Step 2 - Clearly Identify the Results You Want To Achieve - Define Your System Solution – Metric Visibility

Visual Performance Visibility



Messaging



Performance



Information

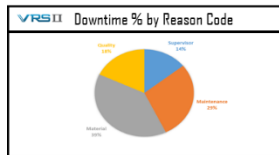


Andons

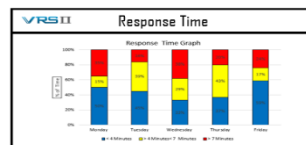
Performance	Productivity	Line Utilization
Target: 20.2	Target: 1000	Target: 99%
Actual: 18.5	Actual: 950	Actual: 95%
Variance: -1.7	Variance: -50	Variance: -4%
Last Week: 19.0	Time: 3:26 PM	Equipment: 0:00:00
1st: 0	Quality: 0:00:00	Materials: 0:00:00
2nd: 0	HM Acc'd	

Design You Own Layout

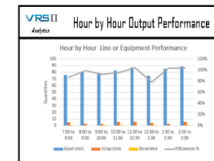
Trend & Analysis Reports and Graphs - Performance Information That Makes a Difference



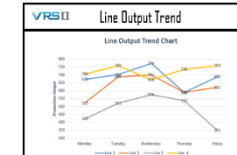
Downtime



Communications



Performance



Trends

Production Run Output Summary

Production Run	Set Date	Line Date	Line Date	Report Date	Report Date	% Utilization

Download to Excel

Step 3 - Work with VersaCall to Develop an Application Profile

Lay Out a Solution for Addressing the Problem Areas - Including the Modules & Financial Justification

Also Installation & Configuration Packages Available

For Developing a System Solution – *We want to start where you want to end.*